

Date: 07/03/2018

Client number: 000027

Re:

0429.593.895

EUROPOWER GENERATORS BVBA

TEGELRIJSTRAAT 175

3850 NIEUWERKERKEN



Credit advice / 'Multiscoring'

Date	7-03-2018
Advice	The calculated maximum credit amount is : 1.222.000 EUR
Graydon 'Multiscoring'	The Graydon 'Multiscoring' is of : 86/100
	At your request, the credit advice has been calculated according to the formula known or developed by you.
	It is only a part of the complete report contributing to the overall picture of a company's situation.

Official data

Business number	0429.593.895
Legal form	Private limited liability company
Register legal persons	RLP HASSELT Private law company
Commercial quality according to the CBE	Commercial enterprise, since 7/11/1986
VAT quality according to the CBE	Liable for VAT, since 1/11/1986
Telephone number	011/58.61.61
Telefax	011/58.28.38
Website address	http://www.EUROPOWERGenerators.com
E-mail address	kVA@europowergenerators.com
Date of constitution	12-10-1986
NSSO number	1584118-63
Joint industrial committees	109

History

Date	AMB nr	
25/05/2009	20090608/79226	Change of object
31/12/2008	20090114/7402	Conversion of share capital into euro
31/12/2008	20090114/7402	Extension of financial year till 31/03/2009
31/12/2008	20090114/7402	Change of object
31/12/2008	20090114/7402	Change of closingdate financial year from 31/12 till 31/03
31/12/2008	20090114/7402	Change of name into EUROPOWER GENERATORS
8/07/1995	19950805/95	Change of name into EUROPOWER GENERATORS ULYSES
	19950805/95	Previous denomination : ULYSES
8/07/1995	19950805/95	Transfer of the registered office to TEGELRIJSTRAAT 175 - 3850 NIEUWERKERKEN
	19950805/95	Previously established at TIENSEVEST 19 - 3800 ST-TRUIDEN

[Complete index of all deeds published in the Enclosures to the Moniteur belge](#)

Management

Business manager

0866.504.859 HEPE STEMEX NV, represented by TEGELRIJSTRAAT 202 3850 NIEUWERKERKEN Duration of mandate	Mr LUCAS HEYLANDS from 1/09/2004 (Source : Appendix Moniteur Belge 20041025/149867)
Other mandates	Position
0455.684.917 ENVIRONMENTAL INDUSTRIAL POWER APPLICATIONS NV	Managing director
0826.577.877 KUNSTEN MAGAZIJN CVBA	Director

Commissioner

0453.107.685 MERCKEN & CO BVBA, represented by HEIDESTRAAT 47 3500 HASSELT Duration of mandate	Mr WERY MERCKEN from 27/09/2014 until the annual general meeting at which the annual accounts for the financial year 2017 will be approved (Source : Appendix Moniteur Belge 20160113/6497)
---	---

Business activity

Source

Crossroads bank for Enterprises

The overview of the activity codes is limited to 10 codes.

Code	Since	(1) Primary activity (0) Secondary activity
25290 (1)	31/12/2008	Manufacture of other tanks, reservoirs and containers of metal
2529001 (1)	31/12/2008	Manufacture of metal silos, tanks, reservoirs and similar receivers with a content capacity of over 300 liters
2620001 (1)	31/12/2008	Manufacture of automatic data processing machines, including microcomputers and word processing machines : central processing units, interfaces, consoles, etc.
2711001 (1)	31/12/2008	Manufacture of AC motors
2711002 (1)	31/12/2008	Manufacture of AC generators
2711003 (1)	31/12/2008	Manufacture of electric transformers
2711005 (1)	31/12/2008	Manufacture of electric panels for the collection of solar energy
2813001 (1)	31/12/2008	Manufacture of air - and vacuum pumps, air compressors and compressors for other gases
2813002 (1)	31/12/2008	Manufacture of pumps for liquids, also when fitted with a measuring device
2815003 (1)	31/12/2008	Manufacture of couplings and coupling devices

VAT-registration

27110 (1) Manufacture of electric motors, generators and transformers

NSSO-registration

27110 Manufacture of electric motors, generators and transformers

Own communication

6201	Computer programming activities
2813	Manufacture of other pumps and compressors
2711	Manufacture of electric motors, generators and transformers
3320011	Enterprise for the installation of auxiliary power supply systems (generator aggregates)
252	Manufacture of tanks, reservoirs and containers of metal

Import Countries

Japan, Europe

Export Countries

Europe, Africa, Australia, China, Pakistan
Russia, Ukraine, Egypt, Belarus, Nigeria

Establishments

Number of establishments 1

Source : CBE (Crossroads bank for Enterprises)

(1) Primary activity (0) Secondary activity

Number of establishment unit	2.034.617.362
Starting date	7/11/1986
Name	EUROPOWER GENERATORS
Address	Tegelrijstraat 175 3850 NIEUWERKERKEN
Activity	See heading "enterprise's activity"

The above list of establishments was transmitted to us by the CBE

Staff

EXPLANATION ANNUAL ACCOUNTS	31/03/2017	31/03/2016	31/03/2015
EMPLOYEES ENTERED ON THE REGISTER OF PERSONNEL			
Total number on the closing date	18	18	18
Average number of employees	17	17	17
Number of hours actually worked	29172	28762	29558
TEMPORARY EMPLOYEES, PERSONS PUT AT THE COMPANY'S DISPOSAL			
Costs (in 1000 EURO)	-	-	1

Financial information

Bankers	IBAN	BIC
KBC Bank	BE23 4536 2177 0191	KRED BE BB
ING Belgium	BE33 3350 2438 5846	BBRU BE BB

Nominal capital	18.592,01 EUR
Paid-up capital	18.592,01 EUR
Credit facility (*)	The company doesn't use a short-dated credit facility
Real estate (*)	Property
Mortgage - Pledge (*)	Real estate : Yes Business : Yes Other assets : No
Liquidity position (*)	Positive and increased in comparison with the latest financial year
Profitability (*)	Positive
Solvency (*)	Positive
(*) This information refers to the last annual accounts	

Payments

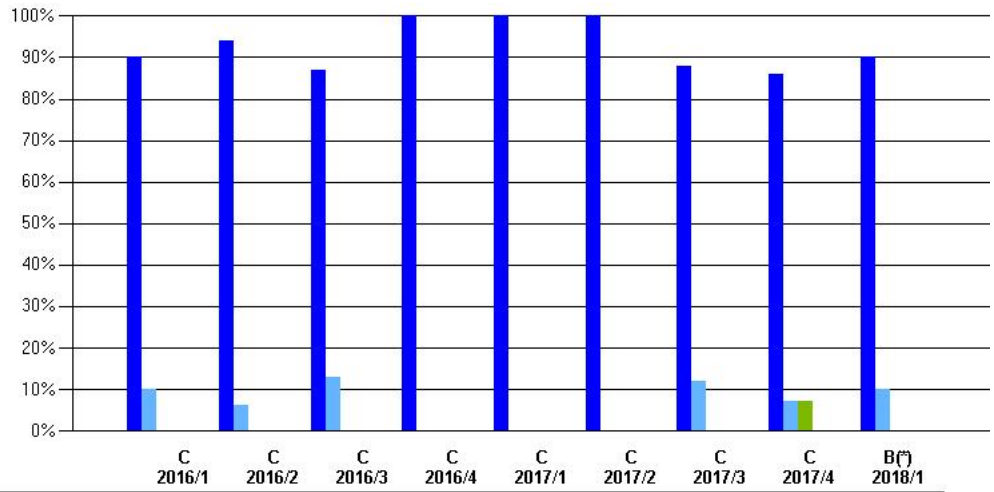
Bankruptcy/judicial reorganization	No reference is made in the Belgian register of bankruptcies
---	--

Analysis of the payment behaviour

Global payment score	97/100 The global payment score is the result of a a weighted calculation applied to the payment behaviours that different suppliers of the company examined report to Graydon Belgium NV/SA. Recent observations preponderate.
-----------------------------	--

Analysis of the payment behaviour of the enterprise EUROPOWER GENERATORS BVBA

The analysis of the payment behaviour is drawn up on the basis of the data from 20 suppliers of the enterprise.



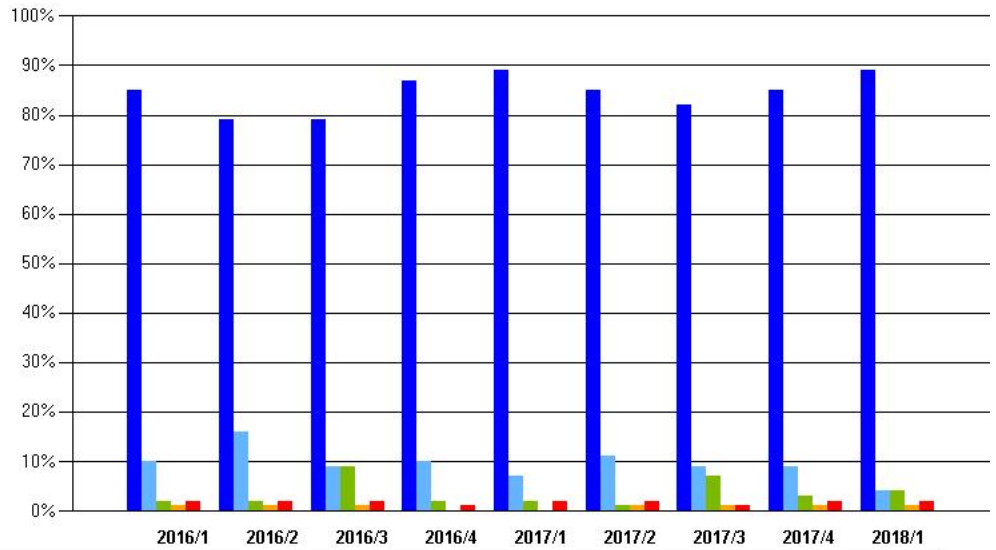
	C 2016/1	C 2016/2	C 2016/3	C 2016/4	C 2017/1	C 2017/2	C 2017/3	C 2017/4	B(*) 2018/1
WITHIN TERM OF PAYMENT	90%	94%	87%	100%	100%	100%	88%	86%	90%
0-30 DAYS AFTER EXPIRY DATE	10%	6%	13%	0%	0%	0%	12%	7%	10%
31-60 DAYS AFTER EXPIRY DATE	0%	0%	0%	0%	0%	0%	0%	7%	0%
61-90 DAYS AFTER EXPIRY DATE	0%	0%	0%	0%	0%	0%	0%	0%	0%
MORE THAN 90 DAYS AFTER EXPIRY DATE	0%	0%	0%	0%	0%	0%	0%	0%	0%

(*) Total amount: A = < 12.500 EUR B = < 50.000 EUR C = < 125.000 EUR D = < 625.000 EUR E = < 1.250.000 EUR F = > 1.250.000 EUR

The above-mentioned graph shows to what extent the agreed terms of payment are respected or exceeded. The payment experiences may be influenced by neglected invoices, disputes, The current quarter not being concluded yet, the data can only be a first indication.

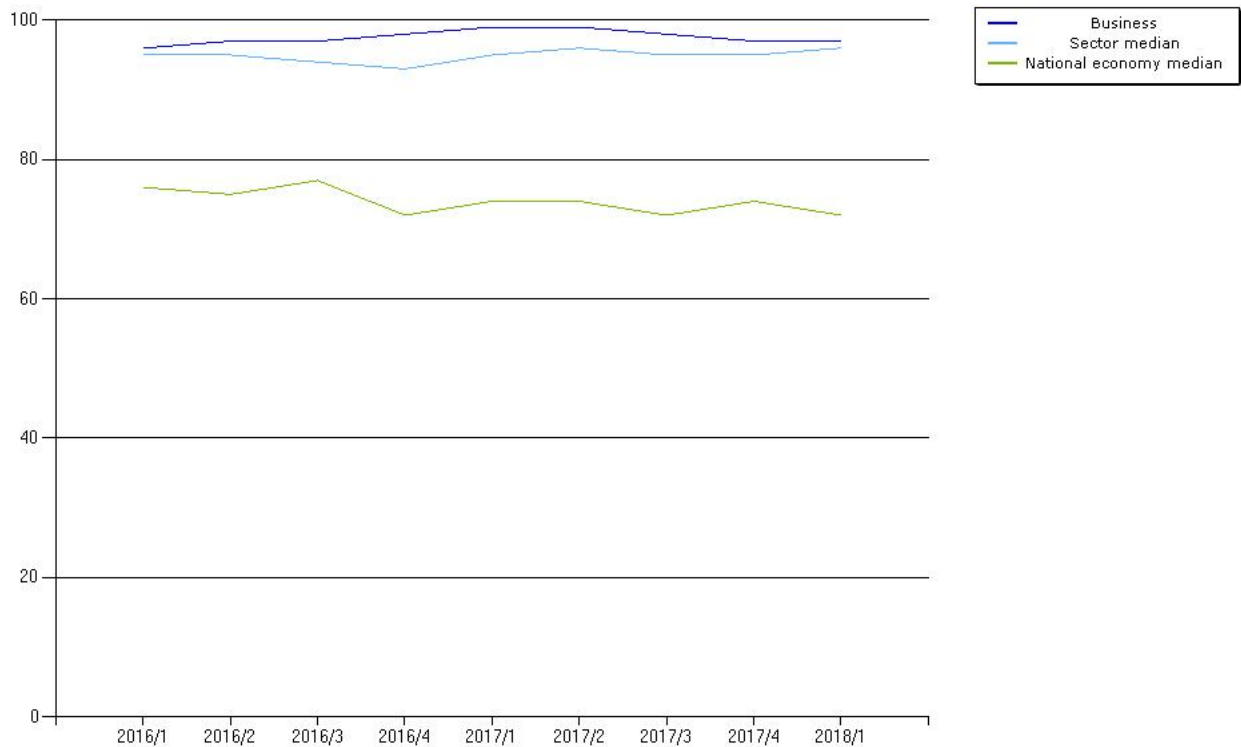
Analysis of the payment behaviour within the sector with Nacebel code 27110

The enterprise EUROPOWER GENERATORS BVBA is registered under Nacebel code 27110 : " Manufacture of electric motors, generators and transformers". Within this Nacebel code we count 261 active enterprises. For 52 % of this population, payment experiences have been delivered to Graydon. From a statistical point of view this random check is amply relevant.

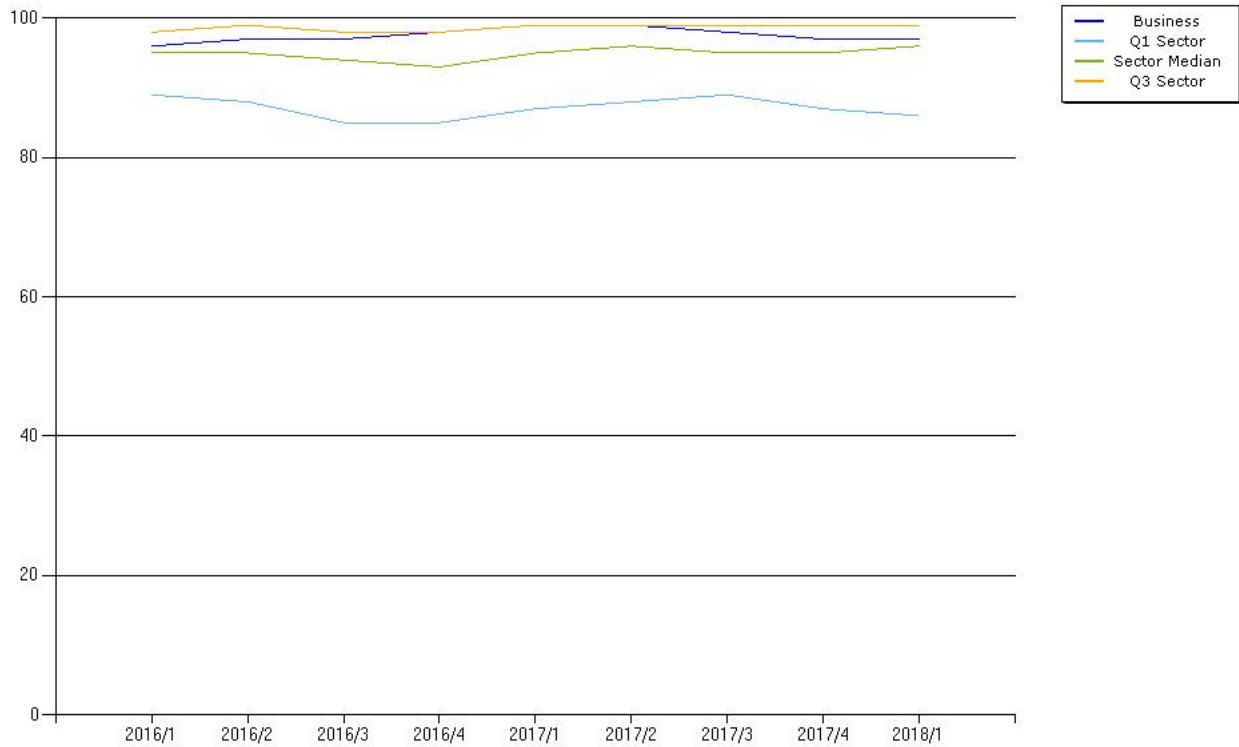


	2016/1	2016/2	2016/3	2016/4	2017/1	2017/2	2017/3	2017/4	2018/1
WITHIN TERM OF PAYMENT	85%	79%	79%	87%	89%	85%	82%	85%	89%
0-30 DAYS AFTER EXPIRY DATE	10%	16%	9%	10%	7%	11%	9%	9%	4%
31-60 DAYS AFTER EXPIRY DATE	2%	2%	9%	2%	2%	1%	7%	3%	4%
61-90 DAYS AFTER EXPIRY DATE	1%	1%	1%	0%	0%	1%	1%	1%	1%
MORE THAN 90 DAYS AFTER EXPIRY DATE	2%	2%	2%	1%	2%	2%	1%	2%	2%

Payment score: evolution-comparison between the enterprise, the sector and the national economy



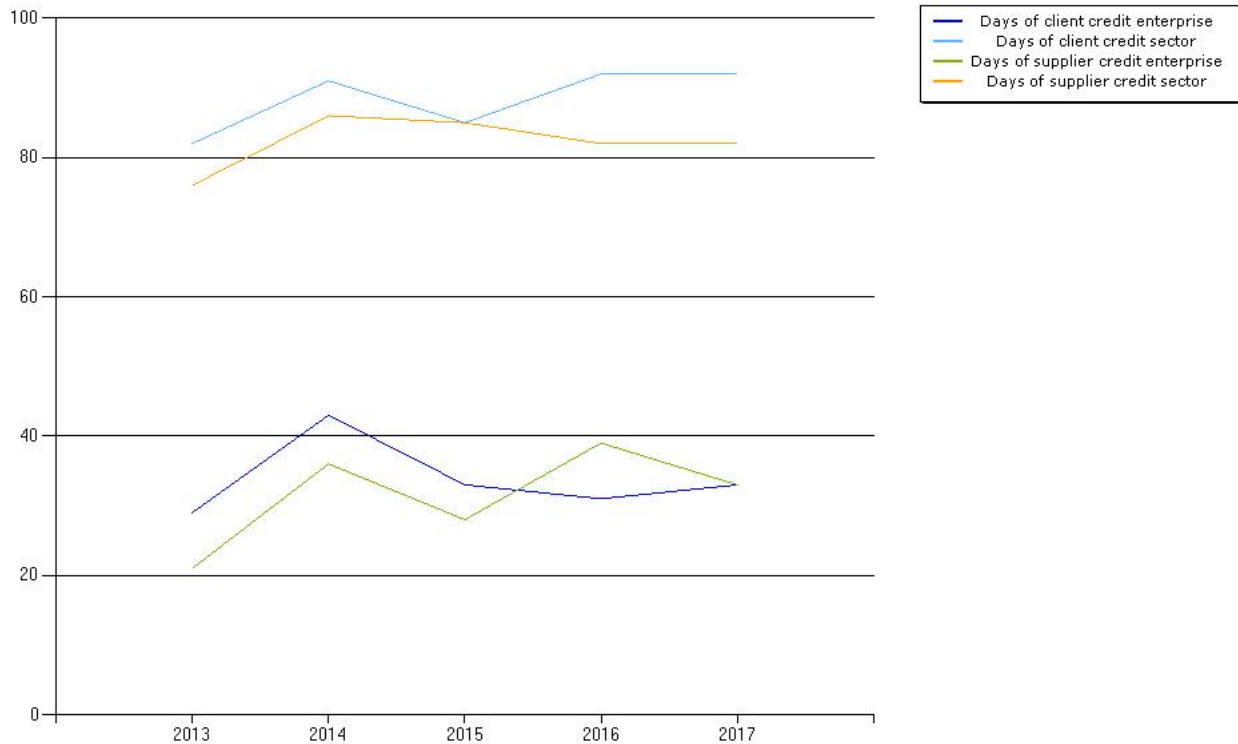
Evolution of the payment score of the enterprise and comparison with the sector quartiles



The business world is very curious about your payment experiences. Signal poor payments, but also reward the good payers. This is why you should participate in our exchange program. In return, you will receive a commercial compensation. [CLICK HERE](#) for more information.

Data from the annual accounts

the number of days of client credit of the enterprise in the latest annual accounts is 33.
 Within the sector the average number of days of client credit amounts to 92 days.
 The number of days of supplier credit of the enterprise in the latest annual accounts is 33.
 Within the sector the number of days of supplier credit amounts to 82 days.



In the latest annual accounts the enterprise publishes a turnover of 15.274.674 EUR.
 On the assumption that the number of days of client credit reflects the extent to which the claims are paid, the non-cash payments made by the clients represent an estimated financial cost of 140.018 EUR on a yearly basis and of 4.243 EUR on a daily basis.

Payment behaviour According to the average days of suppliers' credit there is a slight downward tendency in comparison with last financial year

Protested bills None

Recovery reports None

EXPLANATION ANNUAL ACCOUNTS AMOUNTS OVERDUE IN EUR	TAX ADMINISTRATION	
	NSSO	TAX ADMINISTRATION
31/03/2017	none	none
31/03/2016	none	none
31/03/2015	none	none

Summons of the NSSO None
Summons of the social security fund None since 3/1999
Summons of the social insurance fund for selfemployed persons None since 3/1999

Index Annual accounts

	For an overview and the possibility to request all annual accounts filed with the NBB since 2004 : click here		
Balancing date	31/03/2017	31/03/2016	31/03/2015
Index	2017/585/571	2016/474/409	2015/628/440
Date of general meeting	4/08/2017	27/07/2016	30/09/2015
Date of deposit	31/08/2017	24/08/2016	30/09/2015

Change of the date of the general assembly	The last Saturday of the month of September regarding the annual accounts closed on
Quality of the annual accounts	31/03/2015 : Meets all compulsory controls 31/03/2017 : Meets all compulsory controls
Report commissioner-auditor	regarding the annual accounts closed on 31/03/2016 : declaration without reserve

AFFILIATED COMPANIES

Shareholder(s)

Source : Annual Accounts	Balancing date	% shares
0476.675.618	2016/09	99,33 %
EPEGE NV	2014/09	99,33 %
3850 NIEUWERKERKEN	2013/09	99,33 %
0455.684.917	2017/06	0,66 %
ENVIRONMENTAL INDUSTRIAL POWER APPLICATIONS NV	2016/06	0,66 %
3850 NIEUWERKERKEN	2015/06	0,66 %

Participation(s)

Source : Annual Accounts	Balancing date	% shares
0455.684.917	2017/03	0,50 %
ENVIRONMENTAL INDUSTRIAL POWER APPLICATIONS NV	2016/03	0,50 %
3850 NIEUWERKERKEN	2015/03	0,50 %

EXECUTIVES

Inquiry concerning the updating of executives

Date latest modification	7/07/2016
---------------------------------	-----------

Position	Name	Sex M/F	Lang. N/F/E/D
General Manager	LUC HEYLANDS	M	N
Sales	YVES HEYLANDS	M	N
Marketing	FRANK VANDEVENNE	M	N

FiTo®-meter

The FiTo® - score is obtained by positioning the enterprise within the total group of enterprises and within their PU- or DE-sectors over various fiscal years and on basis of percentiles, classifying them each time in the same category (large enterprises publishing a full scheme, small enterprises publishing an abridged scheme and enterprises without personnel).

The sectorial grouping is the classification PU/DE, used by the National Bank of Belgium and based on the Nacebel classification.

The FiTo® - meter is based - without further liability - on research carried out by the Ghent University and the Vlerick Leuven Gent Management School, headed by Professor Dr. Hubert Ooghe and is applied by Graydon Belgium SA under an exclusive agreement. The methods used are theoretically justified and based on empirical research. For predictive purposes, the results must be carefully interpreted, taking into account the limitations of both the method and the actual data.

FiTo®-meter General positioning

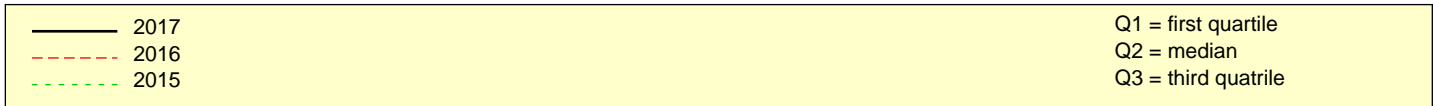
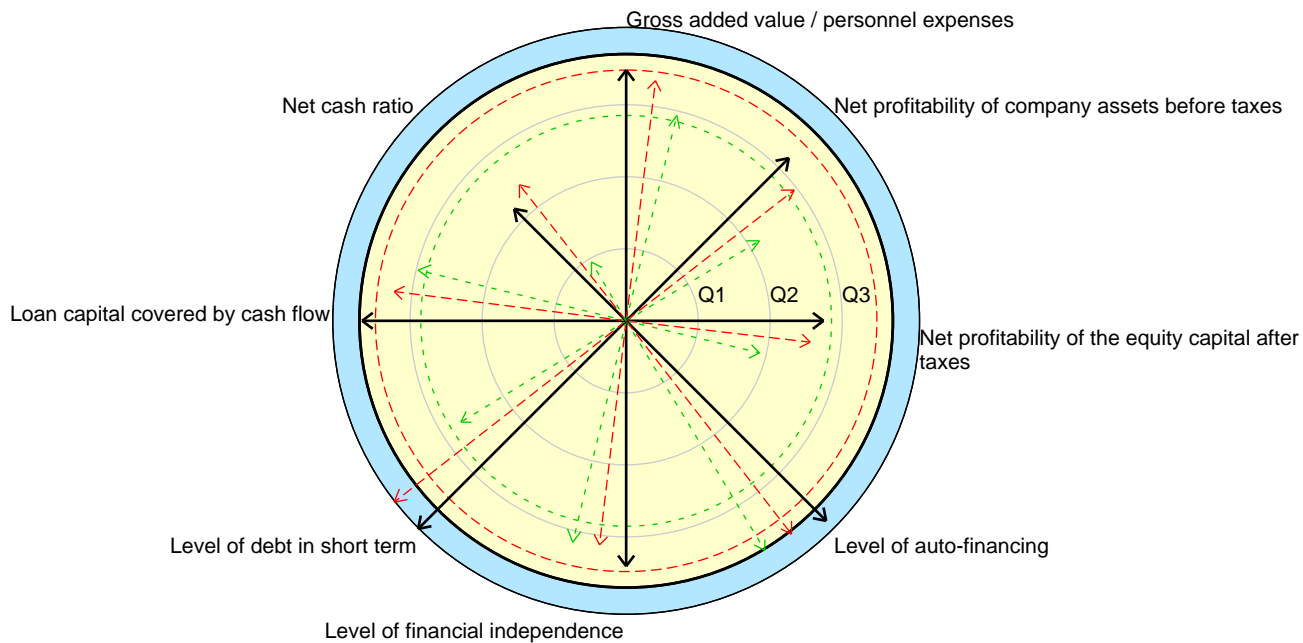
Status of a few relevant ratios compared with all companies that publish a full scheme

	2017		2016		2015	
	Ratio	Percentile	Ratio	Percentile	Ratio	Percentile
Gross added value / personnel expenses	273,10%	85	249,73%	83	181,19%	72
Net profitability of company assets before taxes	16,72%	78	13,70%	73	5,74%	53
Net profitability of the equity capital after taxes	14,81%	67	12,94%	64	6,64%	47
Level of auto-financing	70,04%	96	60,84%	92	60,98%	92
Level of financial independence	70,29%	84	61,09%	77	61,27%	77
Level of debt in short term	-	100	-	100	11,19%	66
Loan capital covered by cash flow	48,34%	90	31,66%	80	24,28%	73
Net cash ratio	9,88%	54	13,09%	59	-2,38%	24
FiTo®-score	0,6247	91	0,6122	85	0,5892	70

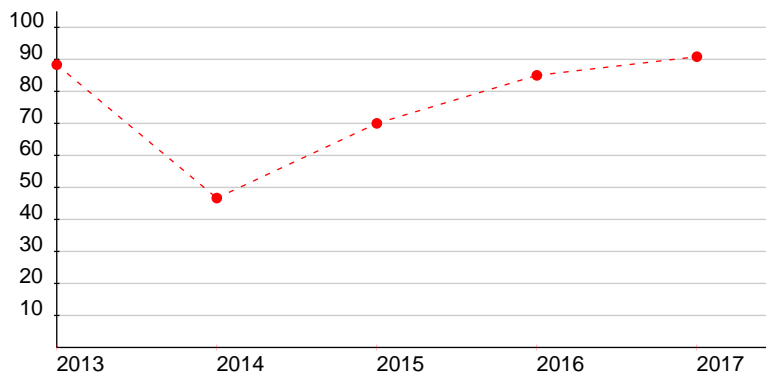
- = ratio incalculable

On the basis of the most recent annual accounts, the enterprise with 91 % belongs to the best of going concerns. These enterprises are successful. Only 9 % of the going concerns have an even higher score.

FiTo®-compass



FiTo®-evolution



FiTo®-meter Sectorial positioning

Sector : PU-250 Production of capital goods (except automobile industry)

Status of a few relevant ratios compared with all companies PU-250 that publish a full scheme

	2017		2016		2015	
	Ratio	Percentile	Ratio	Percentile	Ratio	Percentile
Gross added value / personnel expenses	273,10%	94	249,73%	93	181,19%	85
Net profitability of company assets before taxes	16,72%	79	13,70%	74	5,74%	52
Net profitability of the equity capital after taxes	14,81%	63	12,94%	60	6,64%	43
Level of auto-financing	70,04%	96	60,84%	94	60,98%	91
Level of financial independence	70,29%	88	61,09%	82	61,27%	79
Level of debt in short term	-	100	-	100	11,19%	63
Loan capital covered by cash flow	48,34%	92	31,66%	81	24,28%	73
Net cash ratio	9,88%	56	13,09%	62	-2,38%	26
FiTo®-score	0,6247	93	0,6122	88	0,5892	71

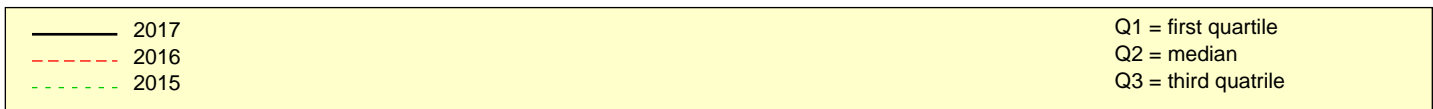
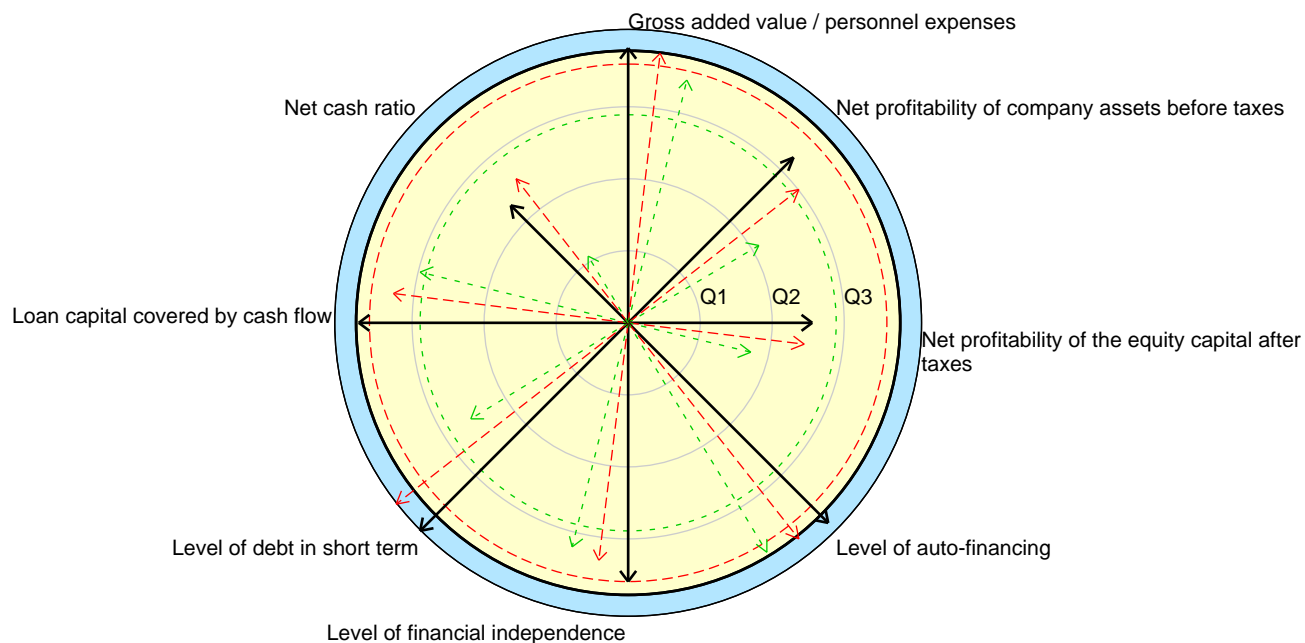
- = ratio incalculable

Sector positioning gives the same results as the general positioning.

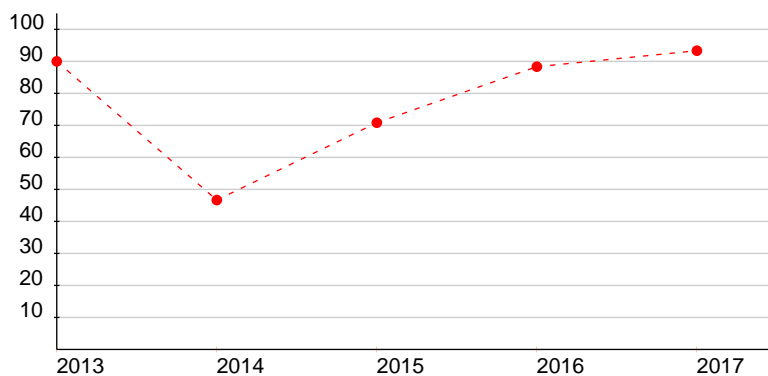
With a score of 93 the enterprise belongs to the best of going concerns in the sector PU-250 .

These enterprises are successful. Only 7 % of the going concerns have an even higher score.

FiTo®-compass



FiTo®-evolution



CREDITEL BASIC FINANCIAL ANALYSIS

For an overview and the possibility to request all annual accounts filed with the NBB since 2004 : [click here](#)

Annual account	03/2017	03/2016	03/2015
Nature	40	40	40

In EUR

Turnover	15.274.674	14.317.552	12.647.212
Trading results	1.129.573	885.115	358.974
Result financial year	762.705	567.611	260.286
Nett working-capital	3.777.031	2.787.918	2.114.171
Own capital	5.149.246	4.386.542	3.918.931
Cashflow	1.031.865	884.333	601.568
Investments	103.351	73.451	612.516

Current ratio (*)	2,91	2,04	1,88
Acid test ratio (*)	1,22	0,85	0,68
General degree of debts in % (*)	29,71	38,90	38,72
Gross sales margin in %	9,27	8,38	5,28
Nett sales margin in %	7,38	6,17	2,84

Average days clients' credit (*)	33	31	33
Average days suppliers' credit (*)	33	39	28

(*) See branch average in following table

Industry average

NACEBEL activity code (allocated by the VAT authorities)

271 Manufacture of electric motors, generators, transformers and electric distribution and control apparatus

Year	2017	2016	2015
Current ratio	0,00	2,00	1,95
Acid test ratio	0,00	1,57	1,60
General degree of debts in %	0,00	81,80	78,92

Average days clients' credit		92	85
Average days suppliers' credit		82	85

ANNUAL ACCOUNTS

For an overview and the possibility to request all annual accounts filed with the NBB since 2004 : [click here](#)

Amounts in EUR		3/2017	%	3/2016	%	3/2015
----------------	--	------------------------	---	------------------------	---	--------

Assets						
Fixed assets	2128	1.567.288	-8	1.705.599	-9	1.867.996
Intangible assets	21	2.387	-55	5.273	-56	12.009
Tangible assets	2227	1.563.566	-8	1.698.991	-8	1.854.652
Land and buildings	22	1.396.578	-9	1.529.657	-8	1.654.969
Plant, machinery and equipment	23	106.553	-6	113.288	-21	143.720
Furniture and vehicles	24	60.434	8	56.046		55.964
Financial assets	28	1.335		1.335		1.335
Affiliated enterprises	2801	1.335		1.335		1.335
- investments	280	1.335		1.335		1.335
Current assets	2958	5.758.532	5	5.474.278	21	4.528.152
Stocks and contracts in progress	3	3.350.913	5	3.184.206	10	2.893.544
Stocks	3036	3.350.913	5	3.184.206	10	2.893.544
- goods purchased for resale	34	3.350.913	5	3.184.206	10	2.893.544
Accounts receivable within one year	4041	1.671.716	13	1.484.180	6	1.397.452
Trade debtors	40	1.390.353	13	1.225.704	6	1.158.954
Other amounts receivable	41	281.363	9	258.476	8	238.498
Cash at bank and in hand	5458	569.090	-21	716.539	404	142.242
Deferred charges and accrued income	4901	166.813	87	89.353	-6	94.914
Total Assets	2058	7.325.819	2	7.179.877	12	6.396.149

Liabilities						
Capital and reserves	1015	5.149.247	17	4.386.542	12	3.918.931
Capital	10	18.592		18.592		18.592
Issued capital	100	18.592		18.592		18.592
Reserves	13	5.130.655	17	4.367.950	12	3.900.339
Legal reserve	130	1.859		1.859		1.859
Reserves avail. for distribution	133	5.128.795	17	4.366.091	12	3.898.480
Provisions and deferred taxes	16	195.072	82	106.975	69	63.236
Provis. for liabilities & charges	1605	195.072	82	106.975	69	63.236
- Pensions & similar obligations	160	-		71.587		-
- Other liabilities and charges	1645	195.072	451	35.388	-44	63.236
Creditors	1749	1.981.501	-26	2.686.360	11	2.413.982

Amounts payable within one year	4248	1.869.332	-28	2.585.740	16	2.233.350
Financial debts	43	-		-		250.000
- credit institutions	4308	-		-		250.000
Trade debts	44	1.210.378	-11	1.356.875	50	905.510
- suppliers	4404	1.210.378	-11	1.356.875	50	905.510
Advances receiv.on contr.in progr	46	415.003	1050	36.076	143	14.846
Taxes,remuneration & soc.security	45	243.952	27	192.789	18	162.995
- taxes	4503	86.645	140	36.047	376	7.567
- remuneration & soc. security	4549	157.307		156.742	1	155.427
Other amounts payable	4748	-		1.000.000	11	900.000
Accrued charges and deferred income	4923	112.169	11	100.620	-44	180.631
Total Liabilities	1049	7.325.819	2	7.179.877	12	6.396.149

Profit & loss account						
Operating income	7076A	15.341.231	7	14.365.140	13	12.692.178
Turnover	70	15.274.674	7	14.317.552	13	12.647.212
Other operating income	74	46.618	-2	47.588	6	44.966
Non-recurring operating income	76A	19.940		-		-
Operating charges	6066A	14.211.658	5	13.480.025	9	12.333.204
Raw mat.,consum. & goods f.resale	60	12.081.626	5	11.459.790	11	10.278.143
- purchases	6008	12.215.318	4	11.759.028	9	10.786.585
- increase-decrease in stocks	609	-133.692	55	-299.238	41	-508.442
Services & other goods	61	986.279	13	872.973	-3	904.406
Remunerat.,soc.sec.costs&pensions	62	825.671	3	804.963	-1	815.304
Deprec.of,oth.amts wr.of form.exp	630	234.364	-6	250.080	3	243.597
Incr.-decr.amts wr.of contr.i.pro	6314	-33.015	-244	22.902	-62	60.157
Provis. for lianilities & charges	6358	88.096	101	43.740	613	6.131
Other operating charges	6408	26.347	3	25.577		25.466
Non-recurring operating charges	66A	2.290		-		-
Operating profit (loss)	9901	1.129.573	28	885.115	147	358.975
Financial income	7576B	99.424	26	79.091	-11	88.823
Recurring financial income	75	99.424	26	79.091	-11	88.823
Income from current assets	751	-		50	-45	91
Other financial income	7529	99.424	26	79.041	-11	88.732
Financial charges	6566B	87.906	-25	117.604	40	83.990
Recurring financial charges	65	87.906	-25	117.604	40	83.990
Interest and other debts charges	650	49.500	-10	55.147	916	5.429
Decr.in amts wr.off curr.ass.	651	-		-		31.397
Other financial charges	6529	38.406	-39	62.457	32	47.164
Profit/Loss period before taxes	9903	1.141.091	35	846.602	133	363.808
Income taxes	6777	378.386	36	278.991	169	103.522
Taxes	6703	378.731	36	278.991	169	103.522
Adj.of inc.tax.& wr.-b.of tax prv	77	345		-		-
Profit/Loss for the period	9904	762.705	34	567.611	118	260.286
Profit/Loss period avail. for appr.	9905	762.705	34	567.611	118	260.286

Appropriation account						
Profit/Loss to be appropriated	9906	762.705	34	567.611	118	260.286
Appropriation to capital & reserves	6912	762.705	63	467.611	80	260.286
To other reserves	6921	762.705	63	467.611	80	260.286
Distribution of profit	6947	-		100.000		-
Dividends	694	-		100.000		-

Explanatory notes						
Debts fallen due towards tax adm.	9072	-		-		-
Debts fallen due towards NSSO	9076	-		-		-
Extraordinary income	76	19.940		-		-
Extraordinary charges	66	2.290		-		-
Operating subsid.grant.by publ.auth	740	18.437	-17	22.138	-32	32.375
Taxes related to operations	640	26.347	3	25.577		25.466
Income taxes,withh.tax. due or paid	9134	378.731	36	278.991	169	103.522
Amt of VAT tax charg. to th enterpr	9145	2.755.534	5	2.636.345	8	2.450.698
Amt of VAT tax charg. by th enterpr	9146	2.031.697	27	1.597.287	-17	1.913.387

Mortgage data according to the details of the last annual account						
		As a guarantee for debts and obligations from				
		the company		third parties		
Mortgages						
Amount of the subscription	917	1.243.681		-		-
Pledge on the business						
Amount of the subscription	918	161.131		-		-

SOCIAL ANNUAL ACCOUNTS

		3/2017	3/2016
STATUS OF EMPLOYED PERSONS			
EMPLOYEES REGISTERED PERSONNEL REGISTER			
During the financial year			
Total			
- Full-time			
Average number of employees	1001	15,80	16,20
Actual number of hours performed	1011	26.476	26.816
Personnel costs	1021	662.351	677.089
- Part time			
Average number of employees	1002	2,30	1,90
Actual number of hours performed	1012	2.696	1.947
Personnel costs	1022	61.781	42.857
- Total (or total in full-time equivalents)			
Average number of employees	1003	17,30	17,30
Actual number of hours performed	1013	29.172	28.762
Personnel costs	1023	724.132	719.946
Profits over and above wages	1033	15.339	14.141
Men			
- Full-time			
Average number of employees	10011	12,80	-
Actual number of hours performed	10111	21.883	-
Personnel costs	10211	546.010	-
- Part time			
Average number of employees	10021	0,30	-
Actual number of hours performed	10121	547	-
Personnel costs	10221	12.885	-
- Total (or total in full-time equivalents)			
Average number of employees	10031	13,10	-
Actual number of hours performed	10131	22.430	-
Personnel costs	10231	558.895	-
Profits over and above wages	10331	12.335	-
Women			
- Full-time			
Average number of employees	10012	3	-
Actual number of hours performed	10112	4.593	-
Personnel costs	10212	116.341	-
- Part time			
Average number of employees	10022	2	-
Actual number of hours performed	10122	2.149	-
Personnel costs	10222	48.896	-
- Total (or total in full-time equivalents)			
Average number of employees	10032	4,20	-
Actual number of hours performed	10132	6.742	-
Personnel costs	10232	165.237	-
Profits over and above wages	10332	3.004	-
Previous financial year			
Total			
Average number of employees	1003P	17,30	17,70
Actual number of hours performed	1013P	28.763	29.558
Personnel costs	1023P	719.946	734.161
Profits over and above wages	1033P	14.141	13.829
Men			
Average number of employees	10031P	12,90	-
Actual number of hours performed	10131P	21.863	-
Personnel costs	10231P	552.708	-
Profits over and above wages	10331P	11.421	-
Women			
Average number of employees	10032P	4,40	-
Actual number of hours performed	10132P	6.900	-
Personnel costs	10232P	167.238	-
Profits over and above wages	10332P	2.720	-
On closing day of financial year			
- Full-time			
No. of employees registered in personnel register	1051	16	15
According to type of employment contract			
Contract for indefinite period	1101	16	15
According to gender and level of education			
Men	1201	13	12
secondary education	12011	13	12
Women	1211	3	3
secondary education	12111	3	3
According to occupational category			
Office staff	1341	9	8
Labourers	1321	7	7
- Part-time			

No. of employees registered in personnel register	1052	2	3
According to type of employment contract			
Contract for indefinite period	1102	2	3
According to gender and level of education			
Men	1202	-	1
secondary education	12012	-	1
Women	1212	2	2
secondary education	12112	2	2
According to occupational category			
Office staff	1342	1	2
Labourers	1322	1	1
- Total in full-time equivalents			
No. of employees registered in personnel register	1053	17,20	17
According to type of employment contract			
Contract for indefinite period	1103	17,20	17
According to gender and level of education			
Men	1203	13	12,80
secondary education	12013	13	12,80
Women	1213	4,20	4,20
secondary education	12113	4,20	4,20
According to occupational category			
Office staff	1343	9,80	9,60
Labourers	1323	7,40	7,40
PERSONNEL TURNOVER DURING THE FINANCIAL YEAR			
INCOMING			
- Part-time			
Number of employees registered	2052	1	-
According to type of employment contract			
Contract for finite period	2112	1	-
- Total in full-time equivalents			
Number of employees registered	2053	0,60	-
According to type of employment contract			
Contract for finite period	2113	0,60	-
OUTGOING			
- Part-time			
Number of employees departed	3052	1	-
According to type of employment contract			
Contract for finite period	3112	1	-
According to reason for departure			
Other reasons	3432	1	-
- Total in full-time equivalents			
Number of employees departed	3053	0,60	-
According to type of employment contract			
Contract for finite period	3113	0,60	-
According to reason for departure			
Other reasons	3433	0,60	-
INFORMATION ON TRAINING AVAILABLE FOR EMPLOYEES			
Total of the formal continuous professional training initiatives for employees at the employer's expense			
- Number of employees involved			
Men	5801	14	13
Women	5811	5	5
- Number of training hours followed			
Men	5802	357	524
Women	5812	99	94
- Net costs for the enterprise			
Men	5803	16.444	18.167
Women	5813	5.286	4.448
Gross costs directly connected to the training			
Men	58031	17.321	18.000
Women	58131	6.000	4.377
Contributions paid and payments to collective funds			
Men	58032	782	746
Women	58132	265	257
Received subventions (deducted)			
Men	58033	1.659	579
Women	58133	979	186
Total of the less formal and informal continuous professional training initiatives for employees at the employer's expense			
- Number of employees involved			
Men	5821	14	13
Women	5831	5	5
- Number of training hours followed			
Men	5822	530	524
Women	5832	90	94
- Net costs for the enterprise			

Men	5823	23.314	23.527
Women	5833	3.966	4.238

The company itself speaking

Mind ! The information you will find in the part hereunder was provided by the enterprise itself and was inserted into the present commercial report without any translation, verification or modification whatsoever. Consequently, Graydon Belgium NV/SA cannot be held responsible for the contents of the information concerned.

Latest modification on 11/06/2012

Interesting Internet links

Brochure <http://www.europowergenerators.com>

Composition of the management committee

Position	Sales & Export Manager
Name	HEYLANDS
First name	Yves
Sex	M
Language	N