

Date: 25/01/2019

Client number: 000027

Re:

0429.593.895

EUROPOWER GENERATORS BVBA

TEGELRIJSTRAAT 175

3850 NIEUWERKERKEN



Credit advice / 'Multiscoring'

Date	25-01-2019
Advice	The calculated maximum credit amount is : 1.386.000 EUR
Graydon 'Multiscoring'	The Graydon 'Multiscoring' is of : 79/100
	At your request, the credit advice has been calculated according to the formula known or developed by you.
	It is only a part of the complete report contributing to the overall picture of a company's situation.

Official data

Business number	0429.593.895
Legal form	Private limited liability company
Register legal persons	RLP HASSELT Private law company
VAT quality according to the CBE	Liable for VAT, since 1/11/1986
Telephone number	011/58.61.61
Telefax	011/58.28.38
Website address	http://www.EUROPOWERGenerators.com
E-mail address	kVA@europowergenerators.com
Date of constitution	12-10-1986
NSSO number	1584118-63
Joint industrial committees	109

History

Date	AMB nr	
25/05/2009	20090608/79226	Change of object
31/12/2008	20090114/7402	Conversion of share capital into euro
31/12/2008	20090114/7402	Extension of financial year till 31/03/2009
31/12/2008	20090114/7402	Change of object
31/12/2008	20090114/7402	Change of closingdate financial year from 31/12 till 31/03
31/12/2008	20090114/7402	Change of name into EUROPOWER GENERATORS
8/07/1995	19950805/95	Change of name into EUROPOWER GENERATORS ULYSES
	19950805/95	Previous denomination : ULYSES

8/07/1995

[19950805/95](#)

Transfer of the registered office to TEGELRIJSTRAAT 175 - 3850 NIEUWERKERKEN

[19950805/95](#)

Previously established at TIENSEVEST 19 - 3800 ST-TRUIDEN

Subject to VAT administration since 11/1986

[Complete index of all deeds published in the Enclosures to the Moniteur belge](#)

Management

Business manager

[0866.504.859](#)HEPE STEMEX NV,
represented by
TEGELRIJSTRAAT 202
3850 NIEUWERKERKEN
Duration of mandate

Mr LUCAS HEYLANDS

from 1/09/2004 (Source : Appendix Moniteur Belge [20041025/149867](#))

Other mandates

Position

[0455.684.917](#) ENVIRONMENTAL INDUSTRIAL POWER APPLICATIONS NV

Managing director

[0826.577.877](#) KUNSTEN MAGAZIJN CVBA

Director

Commissioner

[0453.107.685](#)MERCKEN & CO BVBA,
represented by
HEIDESTRAAT 47
3500 HASSELT
Duration of mandate

Mr WERY MERCKEN

from 27/09/2014 until the annual general meeting at which the annual accounts for the financial year 2017 will be approved (Source : Appendix Moniteur Belge [20160113/6497](#))

Business activity

Source

Crossroads bank for Enterprises

The overview of the activity codes is limited to 10 codes.

Code	Since	(1) Primary activity (0) Secondary activity
25290 (1)	31/12/2008	Manufacture of other tanks, reservoirs and containers of metal
2529001 (1)	31/12/2008	Manufacture of metal silos, tanks, reservoirs and similar receivers with a content capacity of over 300 liters
2620001 (1)	31/12/2008	Manufacture of automatic data processing machines, including microcomputers and word processing machines : central processing units, interfaces, consoles, etc.
2711001 (1)	31/12/2008	Manufacture of AC motors
2711002 (1)	31/12/2008	Manufacture of AC generators
2711003 (1)	31/12/2008	Manufacture of electric transformers
2711005 (1)	31/12/2008	Manufacture of electric panels for the collection of solar energy
2813001 (1)	31/12/2008	Manufacture of air - and vacuum pumps, air compressors and compressors for other gases
2813002 (1)	31/12/2008	Manufacture of pumps for liquids, also when fitted with a measuring device
2815003 (1)	31/12/2008	Manufacture of couplings and coupling devices

VAT-registration

[27110 \(1\)](#) Manufacture of electric motors, generators and transformers

NSSO-registration	
27110	Manufacture of electric motors, generators and transformers
Own communication	
6201	Computer programming activities
2813	Manufacture of other pumps and compressors
2711	Manufacture of electric motors, generators and transformers
3320011	Enterprise for the installation of auxiliary power supply systems (generator aggregates)
252	Manufacture of tanks, reservoirs and containers of metal

Import Countries	Japan, Europe
Export Countries	Europe, Africa, Australia, China, Pakistan Russia, Ukraine, Egypt, Belarus, Nigeria

Establishments

Number of establishments	1
---------------------------------	---

Source : CBE (Crossroads bank for Enterprises)

(1) Primary activity (0) Secondary activity

Number of establishment unit	2.034.617.362
Starting date	7/11/1986
Name	EUROPOWER GENERATORS
Address	Tegelrijstraat 175 3850 NIEUWERKERKEN
Activity	See heading "enterprise's activity"

The above list of establishments was transmitted to us by the CBE

Staff

EXPLANATION ANNUAL ACCOUNTS	31/03/2018	31/03/2017	31/03/2016
EMPLOYEES ENTERED ON THE REGISTER OF PERSONNEL			
Total number on the closing date	22	18	18
Average number of employees	20	17	17
Number of hours actually worked	34283	29172	28762

Financial information

Bankers	IBAN	BIC
KBC Bank	BE23 4536 2177 0191	KRED BE BB
ING Belgium	BE33 3350 2438 5846	BBRU BE BB

Nominal capital	18.592,01 EUR
Paid-up capital	18.592,01 EUR
Credit facility (*)	The company doesn't use a short-dated credit facility
Real estate (*)	Property
Mortgage - Pledge (*)	Real estate : Yes Business : Yes Other assets : No
Liquidity position (*)	Positive and increased in comparison with the latest financial year
Profitability (*)	Positive
Solvency (*)	Positive

(*) This information refers to the last annual accounts

Payments

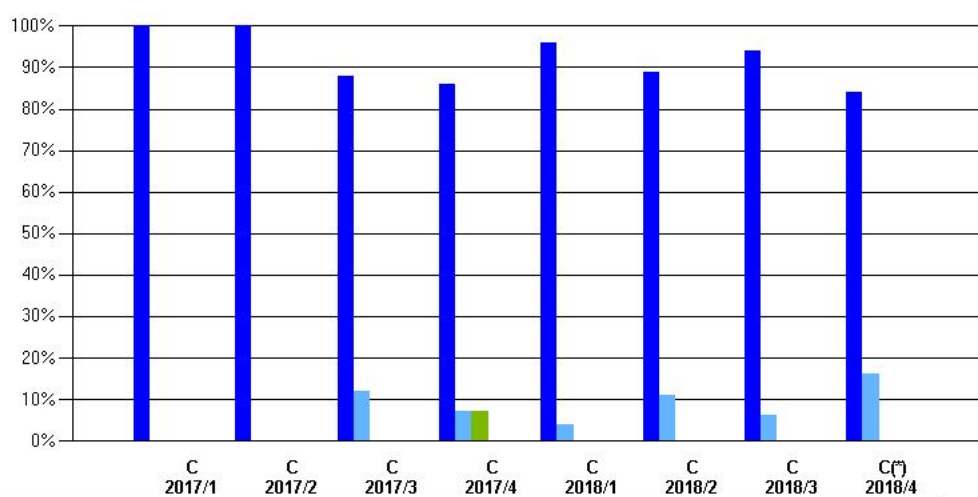
Bankruptcy/judicial reorganization	No reference is made in the Belgian register of bankruptcies
---	--

Analysis of the payment behaviour

Global payment score	97/100
	The global payment score is the result of a a weighted calculation applied to the payment behaviours that different suppliers of the company examined report to Graydon Belgium NV/SA. Recent observations preponderate.

Analysis of the payment behaviour of the enterprise EUROPOWER GENERATORS BVBA

The analysis of the payment behaviour is drawn up on the basis of the data from 20 suppliers of the enterprise.

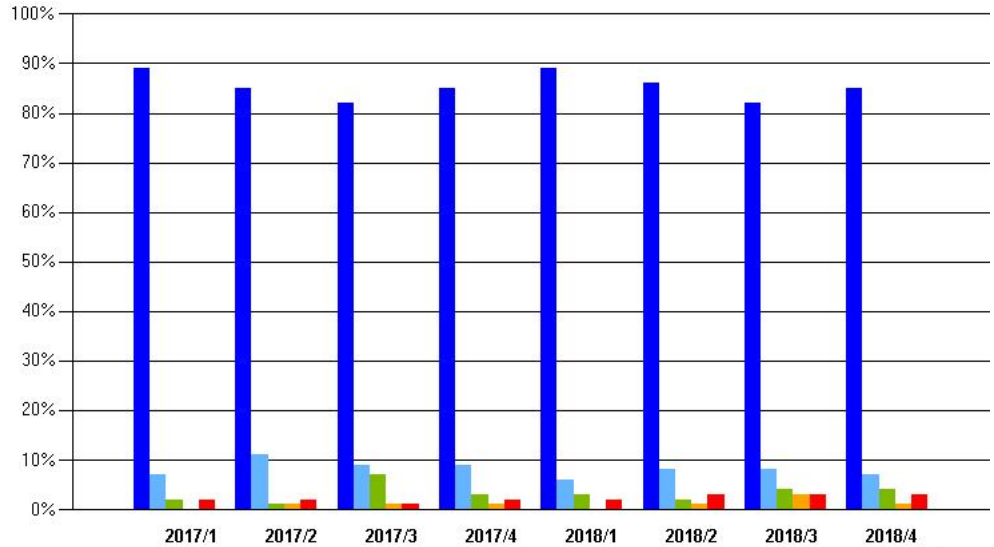


(*) Total amount: A = < 12.500 EUR B = < 50.000 EUR C = < 125.000 EUR D = < 625.000 EUR E = < 1.250.000 EUR F = > 1.250.000 EUR

The above-mentioned graph shows to what extent the agreed terms of payment are respected or exceeded. The payment experiences may be influenced by neglected invoices, disputes, The current quarter not being concluded yet, the data can only be a first indication.

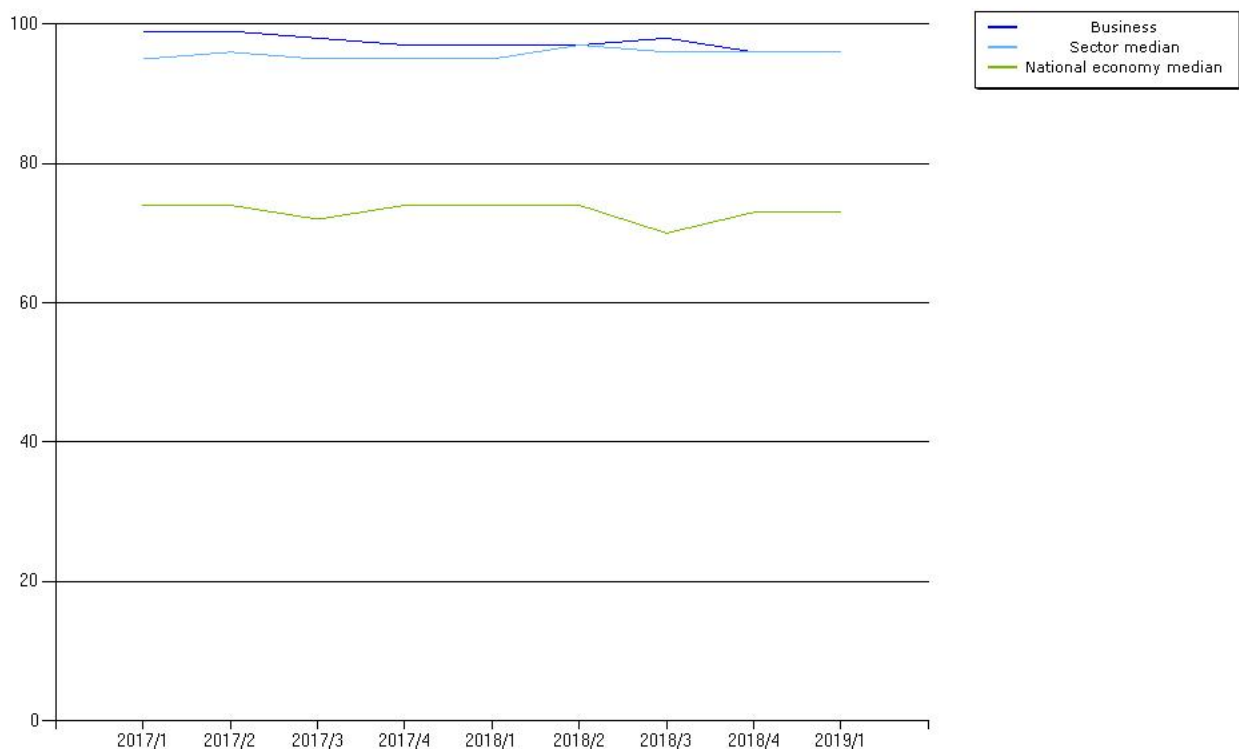
Analysis of the payment behaviour within the sector with Nacebel code 27110

The enterprise EUROPOWER GENERATORS BVBA is registered under Nacebel code 27110 : " Manufacture of electric motors, generators and transformers". Within this Nacebel code we count 254 active enterprises. For 55 % of this population, payment experiences have been delivered to Graydon. From a statistical point of view this random check is amply relevant.

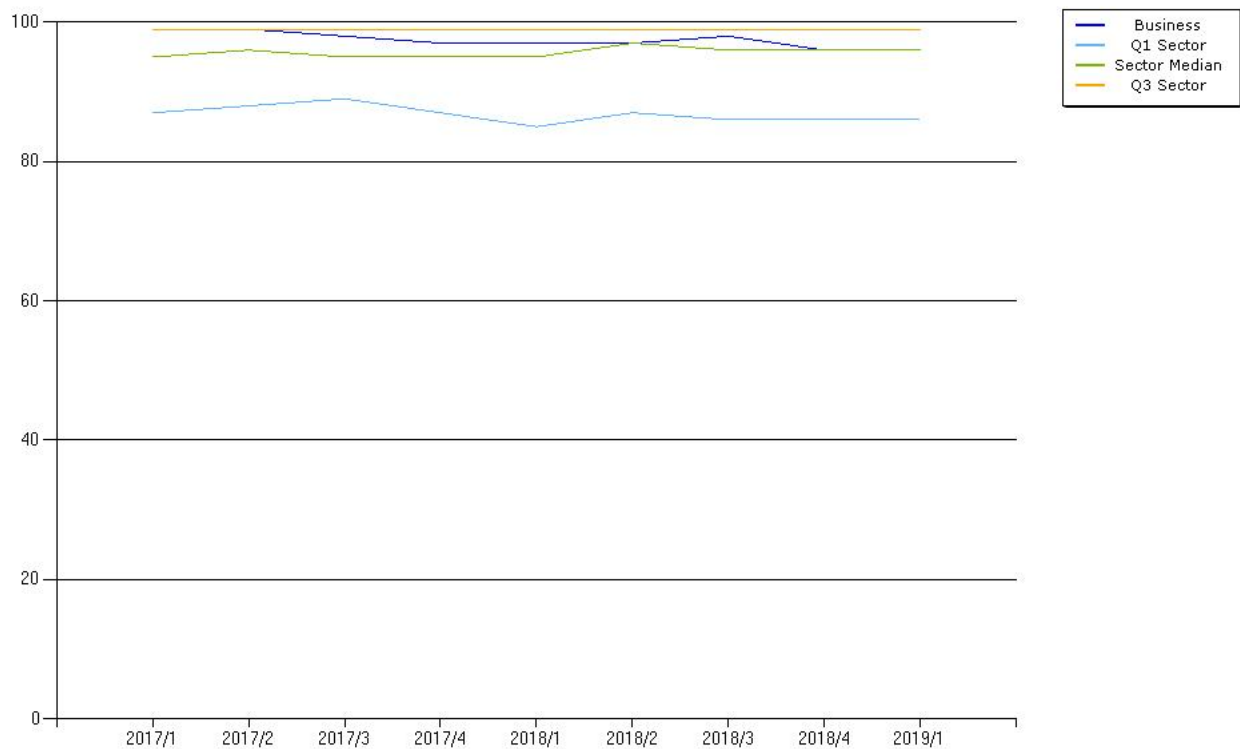


	2017/1	2017/2	2017/3	2017/4	2018/1	2018/2	2018/3	2018/4
WITHIN TERM OF PAYMENT	89%	85%	82%	85%	89%	86%	82%	85%
0-30 DAYS AFTER EXPIRY DATE	7%	11%	9%	9%	6%	8%	8%	7%
31-60 DAYS AFTER EXPIRY DATE	2%	1%	7%	3%	3%	2%	4%	4%
61-90 DAYS AFTER EXPIRY DATE	0%	1%	1%	1%	0%	1%	3%	1%
MORE THAN 90 DAYS AFTER EXPIRY DATE	2%	2%	1%	2%	2%	3%	3%	3%

Payment score: evolution-comparison between the enterprise, the sector and the national economy



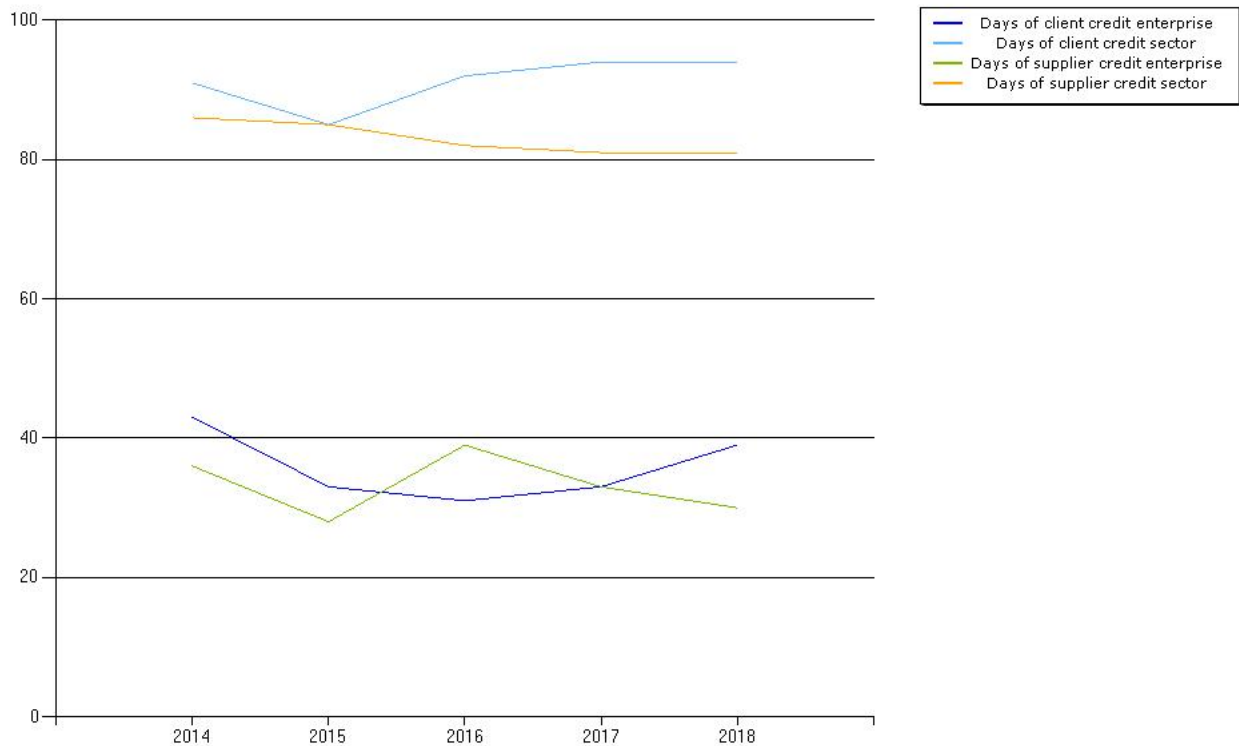
Evolution of the payment score of the enterprise and comparison with the sector quartiles



The business world is very curious about your payment experiences. Signal poor payments, but also reward the good payers. This is why you should participate in our exchange program. In return, you will receive a commercial compensation. [CLICK HERE](#) for more information.

Data from the annual accounts

the number of days of client credit of the enterprise in the latest annual accounts is 39.
Within the sector the average number of days of client credit amounts to 94 days.
The number of days of supplier credit of the enterprise in the latest annual accounts is 30.
Within the sector the number of days of supplier credit amounts to 81 days.



In the latest annual accounts the enterprise publishes a turnover of 17.331.231 EUR.
 On the assumption that the number of days of client credit reflects the extent to which the claims are paid, the non-cash payments made by the clients represent an estimated financial cost of 187.755 EUR on a yearly basis and of 4.814 EUR on a daily basis.

Payment behaviour According to the average days of suppliers' credit there is a slight downward tendency in comparison with last financial year

Protested bills None

Recovery reports None

EXPLANATION ANNUAL ACCOUNTS AMOUNTS OVERDUE IN EUR	NSSO	TAX ADMINISTRATION
	31/03/2018	none
31/03/2017	none	none
31/03/2016	none	none

Summons of the NSSO None
Summons of the social security fund None since 3/1999
Summons of the social insurance fund for selfemployed persons None since 3/1999

Index Annual accounts

	For an overview and the possibility to request all annual accounts filed with the NBB since 2004 : click here		
Balancing date	31/03/2018	31/03/2017	31/03/2016
Index	2018/688/450	2017/585/571	2016/474/409
Date of general meeting	29/09/2018	4/08/2017	27/07/2016
Date of deposit	8/10/2018	31/08/2017	24/08/2016

Quality of the annual accounts	regarding the annual accounts closed on		
	31/03/2017 : Meets all compulsory controls		
	31/03/2018 : Meets all compulsory controls		
Report commissioner-auditor	regarding the annual accounts closed on		
	31/03/2016 : declaration without reserve		

AFFILIATED COMPANIES

Shareholder(s)

Source : Annual Accounts	Balancing date	% shares
0476.675.618	2017/09	99,33 %
EPEGE NV	2016/09	99,33 %
3850 NIEUWERKERKEN	2014/09	99,33 %
0455.684.917	2018/06	0,66 %
ENVIRONMENTAL INDUSTRIAL POWER APPLICATIONS NV	2017/06	0,66 %
3850 NIEUWERKERKEN	2016/06	0,66 %

Participation(s)

Source : Annual Accounts	Balancing date	% shares
0455.684.917	2018/03	0,50 %
ENVIRONMENTAL INDUSTRIAL POWER APPLICATIONS NV	2017/03	0,50 %
3850 NIEUWERKERKEN	2016/03	0,50 %

EXECUTIVES

Inquiry concerning the updating of executives

Date latest modification 7/07/2016

Position	Name	Sex M/F	Lang. N/F/E/D
General Manager	LUC HEYLANDS	M	N
Sales	YVES HEYLANDS	M	N
Marketing	FRANK VANDEVENNE	M	N

FiTo®-meter

The FiTo® - score is obtained by positioning the enterprise within the total group of enterprises and within their PU- or DE-sectors over various fiscal years and on basis of percentiles, classifying them each time in the same category (large enterprises publishing a full scheme, small enterprises publishing an abridged scheme and enterprises without personnel).

The sectorial grouping is the classification PU/DE, used by the National Bank of Belgium and based on the Nacebel classification.

The FiTo® - meter is based - without further liability - on research carried out by the Ghent University and the Vlerick Leuven Gent Management School, headed by Professor Dr. Hubert Ooghe and is applied by Graydon Belgium SA under an exclusive agreement. The methods used are theoretically justified and based on empirical research. For predictive purposes, the results must be carefully interpreted, taking into account the limitations of both the method and the actual data.

FiTo®-meter General positioning

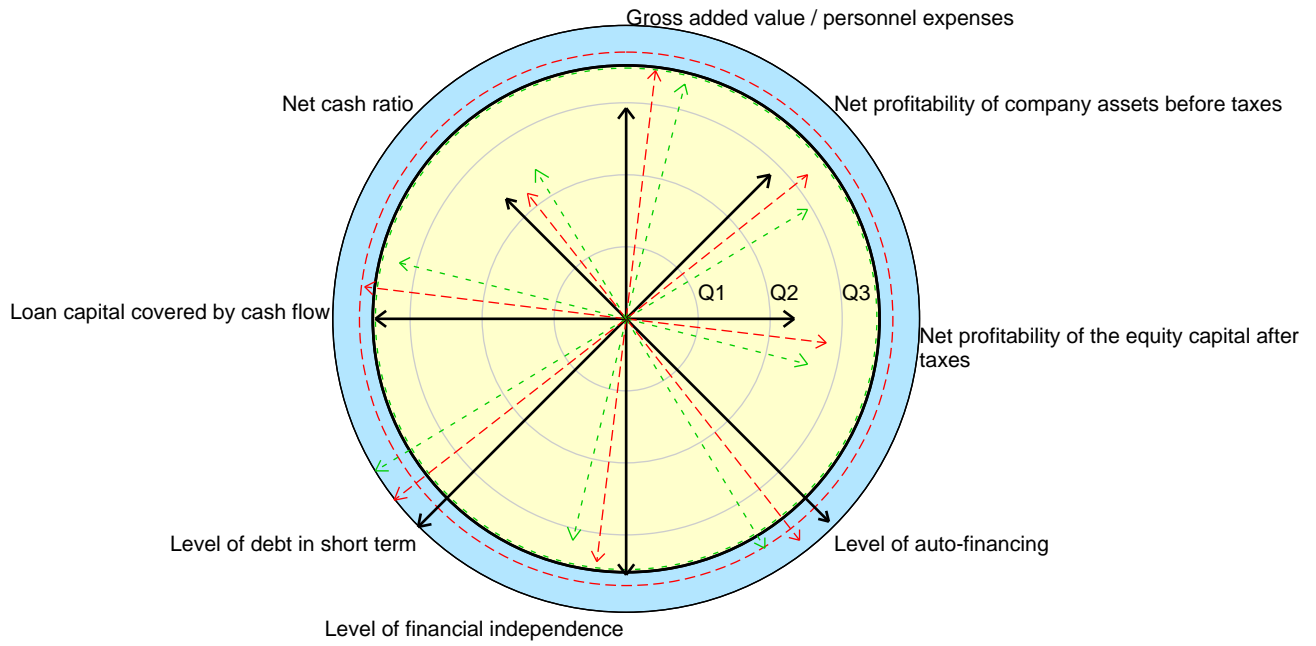
Status of a few relevant ratios compared with all companies that publish a full scheme

	2018		2017		2016	
	Ratio	Percentile	Ratio	Percentile	Ratio	Percentile
Gross added value / personnel expenses	191,66%	72	273,10%	85	249,73%	83
Net profitability of company assets before taxes	11,41%	69	16,72%	79	13,70%	73
Net profitability of the equity capital after taxes	9,68%	57	14,81%	69	12,94%	64
Level of auto-financing	74,63%	98	70,04%	96	60,84%	92
Level of financial independence	74,88%	87	70,29%	84	61,09%	77
Level of debt in short term	-	100	-	100	-	100
Loan capital covered by cash flow	37,31%	85	48,34%	90	31,66%	80
Net cash ratio	11,36%	58	9,88%	55	13,09%	59
FiTo®-score	0,6128	86	0,6247	91	0,6122	85

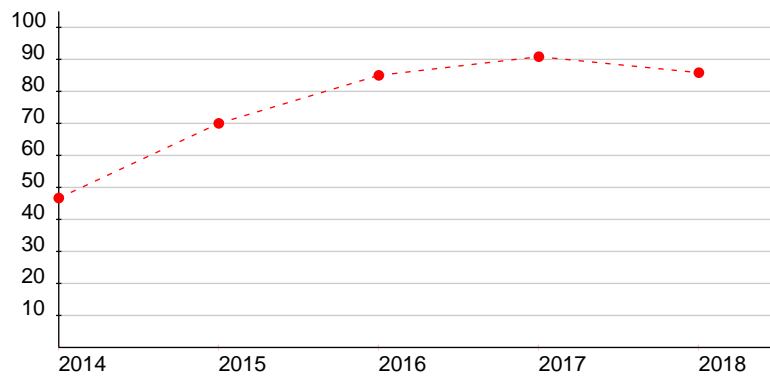
- = ratio incalculable

On the basis of the most recent annual accounts, the enterprise with 86 % belongs to the best of going concerns. These enterprises are successful. Only 14 % of the going concerns have an even higher score.

FiTo®-compass



FiTo®-evolution



FiTo®-meter Sectorial positioning

Sector : PU-250 Production of capital goods (except automobile industry)

Status of a few relevant ratios compared with all companies PU-250 that publish a full scheme

	2018		2017		2016	
	Ratio	Percentile	Ratio	Percentile	Ratio	Percentile
Gross added value / personnel expenses	191,66%	84	273,10%	93	249,73%	93
Net profitability of company assets before taxes	11,41%	64	16,72%	77	13,70%	74
Net profitability of the equity capital after taxes	9,68%	48	14,81%	61	12,94%	60
Level of auto-financing	74,63%	99	70,04%	97	60,84%	94
Level of financial independence	74,88%	91	70,29%	89	61,09%	82
Level of debt in short term	-	100	-	100	-	100
Loan capital covered by cash flow	37,31%	87	48,34%	91	31,66%	81
Net cash ratio	11,36%	58	9,88%	56	13,09%	62
FiTo®-score	0,6128	88	0,6247	93	0,6122	88

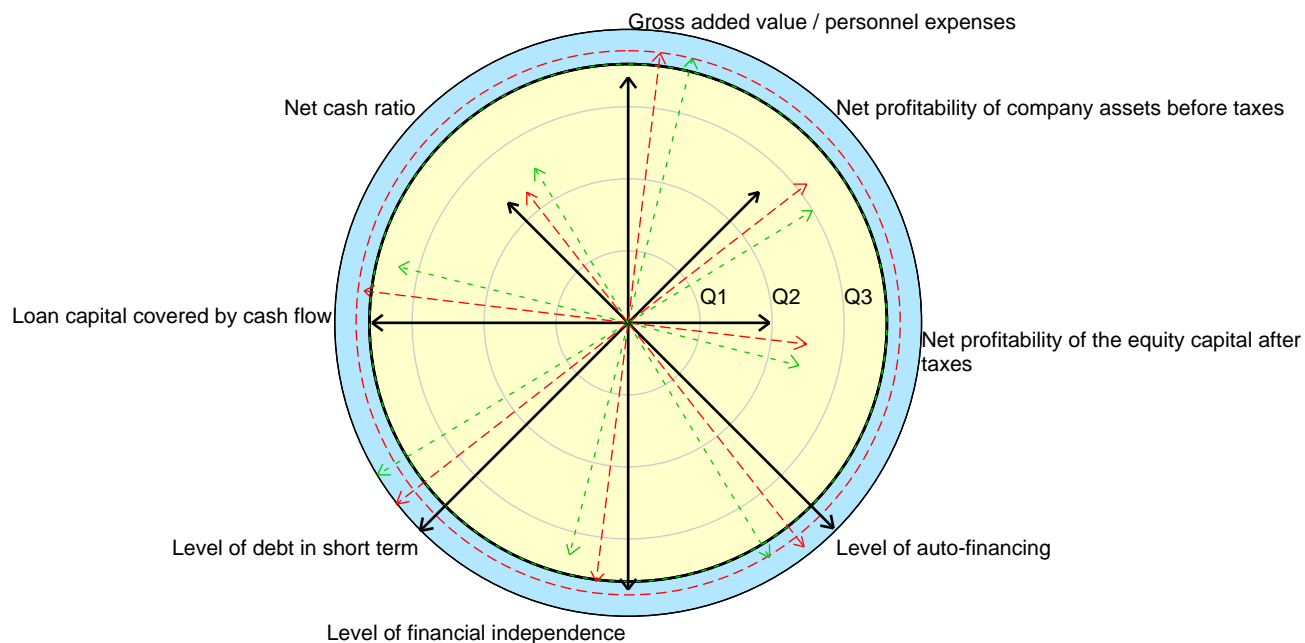
- = ratio incalculable

Sector positioning gives the same results as the general positioning.

With a score of 88 the enterprise belongs to the best of going concerns in the sector PU-250 .

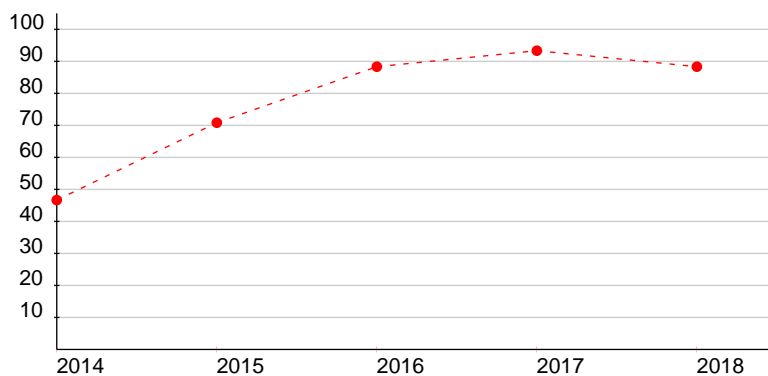
These enterprises are successful. Only 12 % of the going concerns have an even higher score.

FiTo®-compass



<p>— 2018 - - - 2017 - - - 2016</p>	<p>Q1 = first quartile Q2 = median Q3 = third quartile</p>
---	--

FiTo®-evolution



CREDITEL BASIC FINANCIAL ANALYSIS

For an overview and the possibility to request all annual accounts filed with the NBB since 2004 : [click here](#)

Annual account	03/2018	03/2017	03/2016
Nature	40	40	40

In EUR

Turnover	17.331.231	15.274.674	14.317.552
Trading results	774.679	1.129.573	885.115
Result financial year	542.150	762.705	567.611
Nett working-capital	4.337.531	3.777.031	2.787.918
Own capital	5.601.397	5.149.246	4.386.542
Cashflow	701.326	1.031.865	884.333
Investments	45.364	103.351	73.451

Current ratio (*)	3,49	2,91	2,04
Acid test ratio (*)	1,60	1,22	0,85
General degree of debts in % (*)	25,12	29,71	38,90
Gross sales margin in %	5,38	9,27	8,38
Nett sales margin in %	4,46	7,38	6,17

Average days clients' credit (*)	39	33	31
Average days suppliers' credit (*)	30	33	39

(*) See branch average in following table

Industry average

NACEBEL activity code (allocated by the VAT authorities)

271 Manufacture of electric motors, generators, transformers and electric distribution and control apparatus

Year	2018	2017	2016
Current ratio	0,00	1,89	2,00
Acid test ratio	0,00	1,49	1,57
General degree of debts in %	0,00	85,30	81,80

Average days clients' credit		94	92
Average days suppliers' credit		81	82

ANNUAL ACCOUNTS

For an overview and the possibility to request all annual accounts filed with the NBB since 2004 : [click here](#)

Amounts in EUR		3/2018	%	3/2017	%	3/2016
----------------	--	------------------------	---	------------------------	---	------------------------

Assets						
Fixed assets	2128	1.404.772	-10	1.567.288	-8	1.705.599
Intangible assets	21	1.014	-58	2.387	-55	5.273
Tangible assets	2227	1.402.423	-10	1.563.566	-8	1.698.991
Land and buildings	22	1.259.142	-10	1.396.578	-9	1.529.657
Plant, machinery and equipment	23	94.203	-12	106.553	-6	113.288
Furniture and vehicles	24	49.077	-19	60.434	8	56.046
Financial assets	28	1.335		1.335		1.335
Affiliated enterprises	2801	1.335		1.335		1.335
- investments	280	1.335		1.335		1.335
Current assets	2958	6.076.110	6	5.758.532	5	5.474.278
Stocks and contracts in progress	3	3.294.252	-2	3.350.913	5	3.184.206
Stocks	3036	3.294.252	-2	3.350.913	5	3.184.206
- goods purchased for resale	34	3.294.252	-2	3.350.913	5	3.184.206
Accounts receivable within one year	4041	2.082.848	25	1.671.716	13	1.484.180
Trade debtors	40	1.878.553	35	1.390.353	13	1.225.704
Other amounts receivable	41	204.295	-27	281.363	9	258.476
Cash at bank and in hand	5458	690.441	21	569.090	-21	716.539
Deferred charges and accrued income	4901	8.569	-95	166.813	87	89.353
Total Assets	2058	7.480.883	2	7.325.819	2	7.179.877

Liabilities						
Capital and reserves	1015	5.601.397	9	5.149.247	17	4.386.542
Capital	10	18.592		18.592		18.592
Issued capital	100	18.592		18.592		18.592
Reserves	13	5.582.805	9	5.130.655	17	4.367.950
Legal reserve	130	1.859		1.859		1.859
Reserves avail. for distribution	133	5.580.946	9	5.128.795	17	4.366.091
Provisions and deferred taxes	16	140.907	-28	195.072	82	106.975
Provis. for liabilities & charges	1605	140.907	-28	195.072	82	106.975
- Pensions & similar obligations	160	-		-		71.587
- Other liabilities and charges	1645	140.907	-28	195.072	451	35.388
Creditors	1749	1.738.579	-12	1.981.501	-26	2.686.360

Amounts payable within one year	4248	1.709.079	-9	1.869.332	-28	2.585.740
Trade debts	44	1.264.352	4	1.210.378	-11	1.356.875
- suppliers	4404	1.264.352	4	1.210.378	-11	1.356.875
Advances receiv.on contr.in progr	46	129.356	-69	415.003	1050	36.076
Taxes,remuneration & soc.security	45	225.344	-8	243.952	27	192.789
- taxes	4503	43.391	-50	86.645	140	36.047
- remuneration & soc. security	4549	181.953	16	157.307		156.742
Other amounts payable	4748	90.027		-		1.000.000
Accrued charges and deferred income	4923	29.500	-74	112.169	11	100.620
Total Liabilities	1049	7.480.883	2	7.325.819	2	7.179.877

Profit & loss account						
Operating income	7076A	17.395.719	13	15.341.231	7	14.365.140
Turnover	70	17.331.231	13	15.274.674	7	14.317.552
Other operating income	74	64.488	38	46.618	-2	47.588
Non-recurring operating income	76A	-		19.940		-
Operating charges	6066A	16.621.040	17	14.211.658	5	13.480.025
Raw mat.,consum. & goods f.resale	60	14.082.963	17	12.081.626	5	11.459.790
- purchases	6008	13.796.600	13	12.215.318	4	11.759.028
- increase-decrease in stocks	609	286.363	314	-133.692	55	-299.238
Services & other goods	61	1.320.338	34	986.279	13	872.973
Remunerat.,soc.sec.costs&pensions	62	1.022.149	24	825.671	3	804.963
Deprec.of,oth.amts wr.of form.exp	630	215.156	-8	234.364	-6	250.080
Incr.-decr.amts wr.of contr.i.pro	6314	-1.814	95	-33.015	-244	22.902
Provis. for liabilities & charges	6358	-54.166	-161	88.096	101	43.740
Other operating charges	6408	36.415	38	26.347	3	25.577
Non-recurring operating charges	66A	-		2.290		-
Operating profit (loss)	9901	774.679	-31	1.129.573	28	885.115
Financial income	7576B	91.801	-8	99.424	26	79.091
Recurring financial income	75	91.801	-8	99.424	26	79.091
Income from current assets	751	-		-		50
Other financial income	7529	91.801	-8	99.424	26	79.041
Financial charges	6566B	39.417	-55	87.906	-25	117.604
Recurring financial charges	65	39.417	-55	87.906	-25	117.604
Interest and other debts charges	650	-		49.500	-10	55.147
Other financial charges	6529	39.417	3	38.406	-39	62.457
Profit/Loss period before taxes	9903	827.064	-28	1.141.091	35	846.602
Income taxes	6777	284.913	-25	378.386	36	278.991
Taxes	6703	284.913	-25	378.731	36	278.991
Adj.of inc.tax.& wr.-b.of tax prv	77	-		345		-
Profit/Loss for the period	9904	542.150	-29	762.705	34	567.611
Profit/Loss period avail. for appr.	9905	542.150	-29	762.705	34	567.611

Appropriation account						
Profit/Loss to be appropriated	9906	542.150	-29	762.705	34	567.611
Appropriation to capital & reserves	6912	452.150	-41	762.705	63	467.611
To other reserves	6921	452.150	-41	762.705	63	467.611
Distribution of profit	6947	90.000		-		100.000
Dividends	694	90.000		-		100.000

Explanatory notes						
Debts fallen due towards tax adm.	9072	-		-		-
Debts fallen due towards NSSO	9076	-		-		-
Extraordinary income	76	-		19.940		-
Extraordinary charges	66	-		2.290		-
Operating subsid.grant.by publ.auth	740	33.362	81	18.437	-17	22.138
Taxes related to operations	640	36.415	38	26.347	3	25.577
Income taxes,withh.tax. due or paid	9134	284.913	-25	378.731	36	278.991
Amt of VAT tax charg. to th enterpr	9145	3.182.546	15	2.755.534	5	2.636.345
Amt of VAT tax charg. by th enterpr	9146	2.416.008	19	2.031.697	27	1.597.287
Affil.enterpr: amts pay.within 1 yr	9371	90.000		-		-

Mortgage data according to the details of the last annual account						
		As a guarantee for debts and obligations from				
		the company		third parties		
Mortgages						
Amount of the subscription	917	1.243.680		-		-
Pledge on the business						
Amount of the subscription	918	161.131		-		-

SOCIAL ANNUAL ACCOUNTS

		3/2018	3/2017
STATUS OF EMPLOYED PERSONS			
EMPLOYEES REGISTERED PERSONNEL REGISTER			
During the financial year			
Total			
- Full-time			
Average number of employees	1001	18,40	15,80
Actual number of hours performed	1011	30.253	26.476
Personnel costs	1021	829.027	662.351
- Part time			
Average number of employees	1002	3,40	2,30
Actual number of hours performed	1012	4.030	2.696
Personnel costs	1022	75.698	61.781
- Total (or total in full-time equivalents)			
Average number of employees	1003	20,60	17,30
Actual number of hours performed	1013	34.284	29.172
Personnel costs	1023	904.725	724.132
Profits over and above wages	1033	19.667	15.339
Men			
- Full-time			
Average number of employees	10011	13,80	12,80
Actual number of hours performed	10111	22.600	21.883
Personnel costs	10211	626.584	546.010
- Part time			
Average number of employees	10021	1	0,30
Actual number of hours performed	10121	1.220	547
Personnel costs	10221	23.203	12.885
- Total (or total in full-time equivalents)			
Average number of employees	10031	14,40	13,10
Actual number of hours performed	10131	23.819	22.430
Personnel costs	10231	649.787	558.895
Profits over and above wages	10331	14.871	12.335
Women			
- Full-time			
Average number of employees	10012	4,60	3
Actual number of hours performed	10112	7.653	4.593
Personnel costs	10212	202.443	116.341
- Part time			
Average number of employees	10022	2,40	2
Actual number of hours performed	10122	2.810	2.149
Personnel costs	10222	52.495	48.896
- Total (or total in full-time equivalents)			
Average number of employees	10032	6,20	4,20
Actual number of hours performed	10132	10.463	6.742
Personnel costs	10232	254.938	165.237
Profits over and above wages	10332	4.796	3.004
Previous financial year			
Total			
Average number of employees	1003P	17,30	17,30
Actual number of hours performed	1013P	29.172	28.763
Personnel costs	1023P	724.132	719.946
Profits over and above wages	1033P	15.339	14.141
Men			
Average number of employees	10031P	13,10	12,90
Actual number of hours performed	10131P	22.430	21.863
Personnel costs	10231P	558.895	552.708
Profits over and above wages	10331P	12.335	11.421
Men			
Average number of employees	10032P	4,20	4,40
Actual number of hours performed	10132P	6.742	6.900
Personnel costs	10232P	165.237	167.238
Profits over and above wages	10332P	3.004	2.720
On closing day of financial year			
- Full-time			
No. of employees registered in personnel register	1051	18	16
According to type of employment contract			
Contract for indefinite period	1101	18	16
According to gender and level of education			
Men			
secondary education	1201	14	13
Women			
secondary education	1211	4	3
According to occupational category			
Office staff	1341	10	9
Labourers	1321	8	7
- Part-time			

No. of employees registered in personnel register	1052	4	2
According to type of employment contract			
Contract for indefinite period	1102	4	2
According to gender and level of education			
Men	1202	1	-
secondary education	12012	1	-
Women	1212	3	2
secondary education	12112	3	2
According to occupational category			
Office staff	1342	2	1
Labourers	1322	2	1
- Total in full-time equivalents			
No. of employees registered in personnel register	1053	20,60	17,20
According to type of employment contract			
Contract for indefinite period	1103	20,60	17,20
According to gender and level of education			
Men	1203	14,60	13
secondary education	12013	14,60	13
Women	1213	6	4,20
secondary education	12113	6	4,20
According to occupational category			
Office staff	1343	11,60	9,80
Labourers	1323	9	7,40
PERSONNEL TURNOVER DURING THE FINANCIAL YEAR			
INCOMING			
- Full-time			
Number of employees registered	2051	2	-
According to type of employment contract			
Contract for indefinite period	2101	2	-
- Part-time			
Number of employees registered	2052	3	1
According to type of employment contract			
Contract for indefinite period	2102	3	-
Contract for finite period	2112	-	1
- Total in full-time equivalents			
Number of employees registered	2053	3,90	0,60
According to type of employment contract			
Contract for indefinite period	2103	3,90	-
Contract for finite period	2113	-	0,60
OUTGOING			
- Part-time			
Number of employees departed	3052	1	1
According to type of employment contract			
Contract for indefinite period	3102	1	-
Contract for finite period	3112	-	1
According to reason for departure			
Other reasons	3432	1	1
- Total in full-time equivalents			
Number of employees departed	3053	0,50	0,60
According to type of employment contract			
Contract for indefinite period	3103	0,50	-
Contract for finite period	3113	-	0,60
According to reason for departure			
Other reasons	3433	0,50	0,60
INFORMATION ON TRAINING AVAILABLE FOR EMPLOYEES			
Total of the formal continuous professional training initiatives for employees at the employer's expense			
- Number of employees involved			
Men	5801	14	14
Women	5811	7	5
- Number of training hours followed			
Men	5802	456	357
Women	5812	187	99
- Net costs for the enterprise			
Men	5803	23.081	16.444
Women	5813	11.558	5.286
Gross costs directly connected to the training			
Men	58031	25.552	17.321
Women	58131	13.586	6.000
Contributions paid and payments to collective funds			
Men	58032	854	782
Women	58132	391	265
Received subventions (deducted)			
Men	58033	3.325	1.659
Women	58133	2.419	979
Total of the less formal and informal continuous professional training initiatives for employees at the employer's expense			

- Number of employees involved			
Men	5821	14	14
Women	5831	7	5
- Number of training hours followed			
Men	5822	552	530
Women	5832	113	90
- Net costs for the enterprise			
Men	5823	24.006	23.314
Women	5833	4.909	3.966

The company itself speaking

Mind ! The information you will find in the part hereunder was provided by the enterprise itself and was inserted into the present commercial report without any translation, verification or modification whatsoever. Consequently, Graydon Belgium NV/SA cannot be held responsible for the contents of the information concerned.

Latest modification on 11/06/2012

Interesting Internet links

Brochure <http://www.europowergenerators.com>

Composition of the management committee

Position	Sales & Export Manager
Name	HEYLANDS
First name	Yves
Sex	M
Language	N